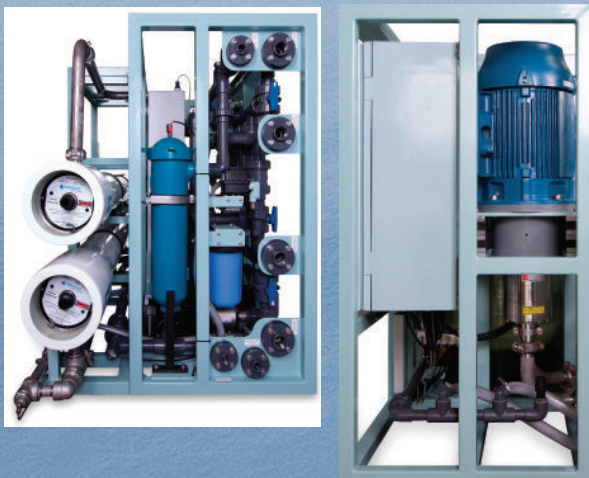


## NEW AQUA-SEP SERIES III - REVERSE OSMOSIS SYSTEMS

Convenience, Performance and Ease of Maintenance in Standard Configurations

Standard systems range from 25 m<sup>3</sup>/d (6,600 GPD) to 100 m<sup>3</sup>/d (26,400 GPD) and handle a wide range of salinity (36,000 TDS to 45,000 TDS), with temperature ranges (0°C / 32°F to 35°C / 95°F). The closed-loop control system is built with NEMA 4X integrity and can be operated in fully automatic or manual modes from the same standard controller. Standard single skids and modular configurations are available.



### Benefits:

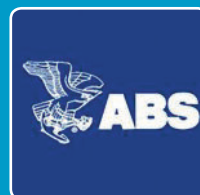
- Carbon Steel, Marine-grade Powder Coated Frame
- Low Consumables - Single 5 micro filter
- Integrated Optional Chemical Feed System
- Full color touch screen
- PLC controls and gauge panel at eye level
- Controls for manual operation at front of unit
- Easy installation, startup and commissioning
- All hookups on one side of the unit
- Improved design for service and maintenance
  - Easy access to vertically mounted high-pressure pumps
  - Ready access to all instruments and filters
- Skidded and modular configurations
- Pre-engineered for all options

### Standard Features:

Booster pump, High Pressure Pump, Automatic Product Water Diversion Valve, Fresh Water Flush Valve, General Alarm Contact, Low Pressure Sensor, High Pressure Sensor

### Accessories

Automatic Multi-Media Filter Backwashing  
Pre-treatment / Post-treatment systems  
Flow meter, Modbus Communications  
UV Sterilizer  
Rehardening Filter

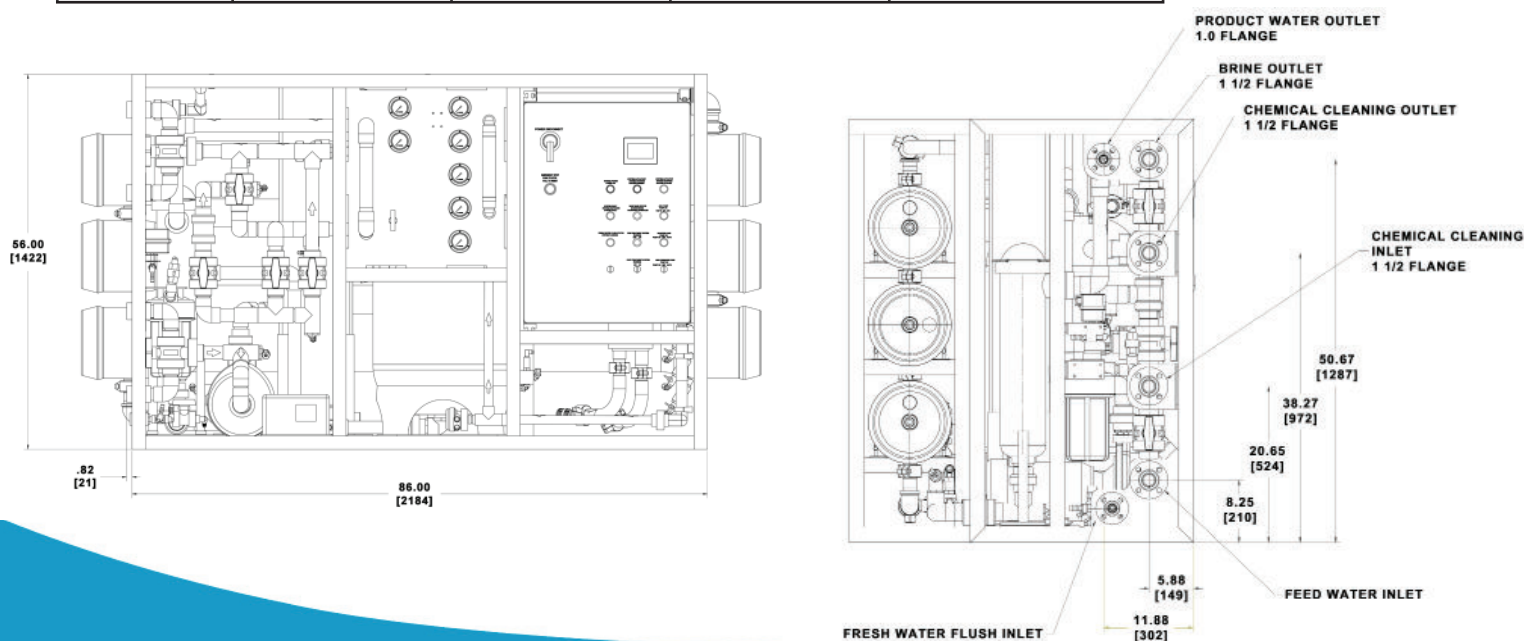


## Aqua-Sep Series III

SYSTEM SPECIFICATIONS	System Size	No. of Membranes	Membrane Configuration	Production / Hour		Production / 24 Hrs.		Weight	
				gal	ltr	gal	ltr	lbs	kg
	25m <sup>3</sup> d	1	Single	275	1042	6605	25000	3048	1385
	30m <sup>3</sup> d	2	Double	330	1250	7926	30000	3117	1417
	40m <sup>3</sup> d	2	Double	440	1667	10568	40000	3117	1417
	45m <sup>3</sup> d	2	Double	495	1875	11889	45000	3117	1417
	50m <sup>3</sup> d	3	Single/Double	550	2083	13210	50000	3290	1495
	60m <sup>3</sup> d	3	Single/Double	660	2500	15852	60000	3290	1495
	70m <sup>3</sup> d	4	Double	770	2917	18494	70000	3463	1574
	80m <sup>3</sup> d	4	Double	880	3333	21136	80000	3463	1574
	90m <sup>3</sup> d	5	Single/Double	990	3750	23778	90000	3636	1653
	100 <sup>3</sup> d	6	Double	1100	4167	26420	100000	3705	1684

### ELECTRICAL REQUIREMENTS

System Size	380/50Hz/3PH	440/60Hz/3PH	460/60Hz/3PH	DATA
25m <sup>3</sup> d to 100m <sup>3</sup> d	33	31	31	Total Horse Power
	52	47	38	Full Load Amps
	100	100	100	Recommended CB



### Compass Water Solutions

15542, Mosher Ave., Tustin, California 92780, USA  
 T: + 1-949-222-5777 F: + 1-949-222-5770  
 info@compasswater.com

[www.compasswater.com](http://www.compasswater.com)