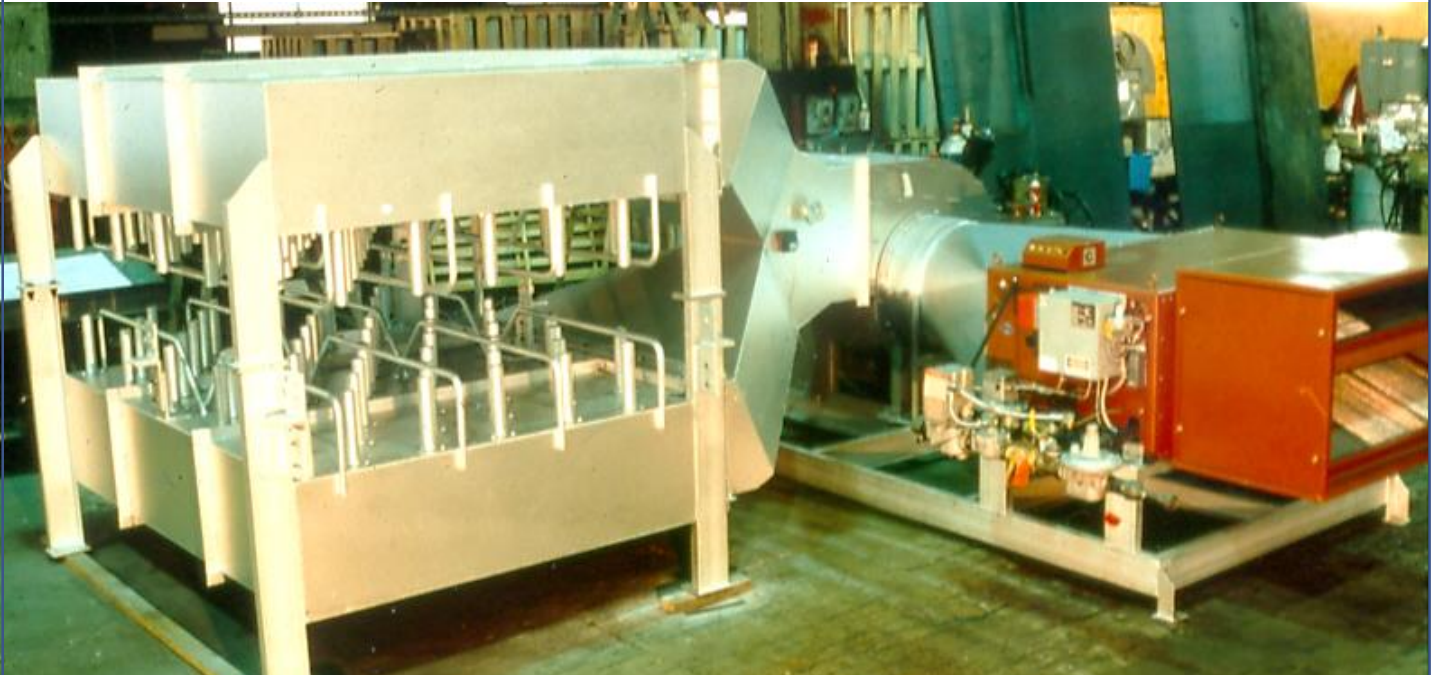


CECO Busch



SURFACE LIQUID REMOVAL FOR PROCESS LINE APPLICATIONS

BUSCH JET*STAR™ METAL STRIP DRYING

HIGH EFFICIENCY | UNIFORM DRYING | STABLE OPERATION

The **BUSCH JET*STAR™** Strip Drying System uses high volume, low pressure, heated air to rapidly dry moving metal strips. The **JET*STAR™** Strip Dryers produce predetermined functional wiping patterns on the strip surface. Air flow and thermal energies are applied in an intensive and uniform manner, resulting in rapid water disengagement and almost instantaneous mist removal from the strip. Spent heat is dissipated in the dryer, thus reducing re-deposition of airborne fog and mist.

JET*STAR's uniformity and repeatability of the drying process across and along the strip enhances film disengagement, mist transport, and evaporation. Problems associated with recirculated systems such as the buildup of

CO₂, CO, humidity, temperature, and corrosion are substantially eliminated.

JET*STAR™ strip dryers are designed using centrifugal fans with backwardly curved wheels which consume less horsepower and create less noise compared to other designs. Most **JET*STAR™** Strip Drying Systems consist of a supply air fan, connecting duct, flow control dampers, air heater, and the **JET*STAR™** Strip Dryer. Steam or natural gas fired heating systems are available.

JET*STAR™ systems are extremely flexible. The design allows for size and velocity adjustments of the dryer's ambient and hot zones specific to each application.

ACCESSORIES AND OPTIONS

- Steam or Gas Fired Heating
- Alternate paint systems
- Horizontal or vertical arrangement
- Support steel and platforms
- Exhaust fans
- Thermal or sound insulation
- Filters for supply air
- Temperature measurement device
- Stainless steel nozzles
- Built-in support rolls

CECO Busch

10431 Perry Highway
Wexford, PA 15090
724-940-2326
BuschSales@OneCECO.com
www.cecoenviro.com/Busch

CECO
ENVIRONMENTAL

CECO Busch



ENERGY EFFICIENT | HIGH CLEARANCE ABOVE PASSLINE

BUSCH JET*STAR™ STRIP BLOW-OFF SYSTEM

IMPROVED X-RAY GAUGE PERFORMANCE

The **BUSCH JET*STAR™** Strip Blow-Off System is designed to effectively remove standing liquid from the top side of moving steel strip. The patented **JET*STAR™** nozzle array provides an intensive, yet uniform “air plow” to disengage and blow off surface liquid. The system is unique as it can be located far away from the strip, reducing the possibility of damage from strip impact. Typically less than 3 feet of line length is required for the **JET*STAR™** head.

Additionally, the unit uses less horsepower than conventional compressed air units.

The **BUSCH JET*STAR™** Strip Blow-Off System typically consists of a supply air fan with motor, **JET*STAR™** head and nozzles, nozzle guards, and support steel. **BUSCH** has the expertise to custom design blow-off systems for a wide variety of strip widths and speeds.

DESIGN AND CONSTRUCTION

The patented **BUSCH JET*STAR™** technology has been successfully used in a variety of strip cooling, drying, and blow-off applications. **BUSCH** has developed aerodynamic models which allow us to select a custom **JET*STAR™** air-jet design configuration for each individual application. Capacity, unit arrangement and dimensions, number of nozzles, and material construction are modified to meet individual user specifications.

CECO Busch

10431 Perry Highway
Wexford, PA 15090
724-940-2326
BuschSales@OneCECO.com
www.cecoenviro.com/Busch